

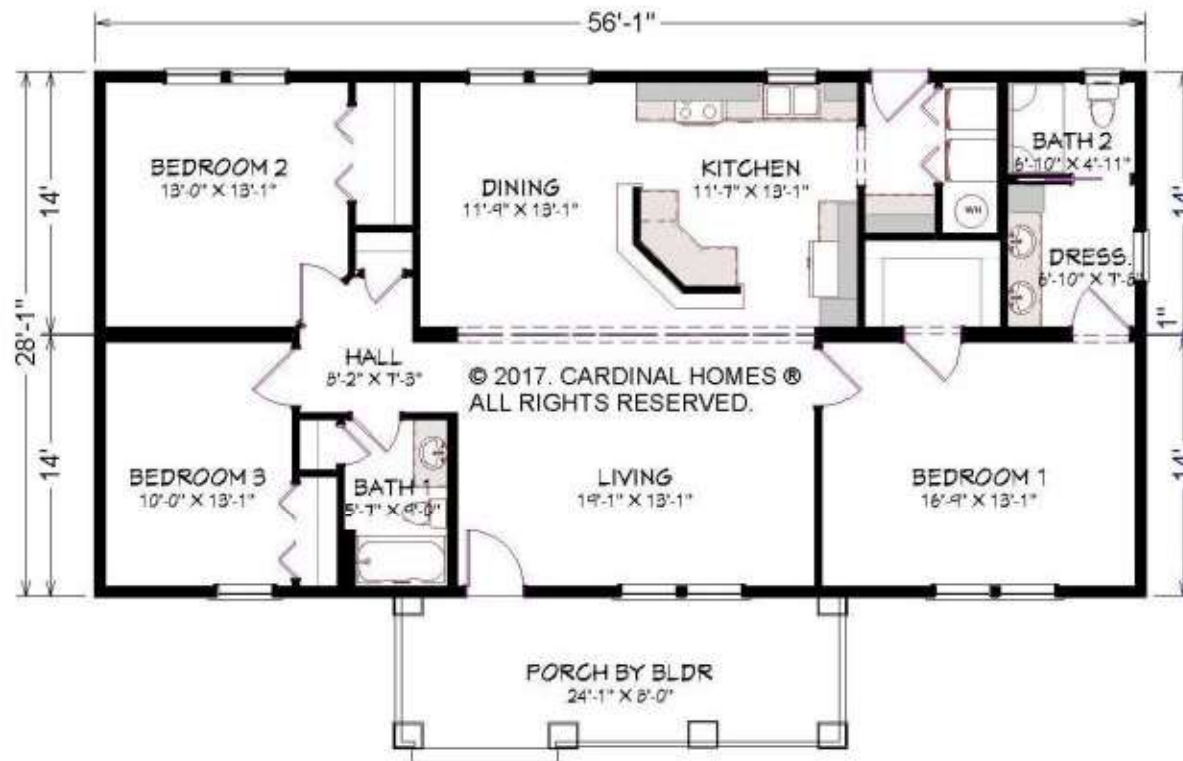


CARDINAL HOMES®

Classic Living Collection

WALTON

1568 Sq. Ft.
56'-0" x 28'-0"



Cardinal Homes®

Kituwah Manufacturing, LLC
d/b/a Cardinal Homes®
525 Barnesville Highway
Wylliesburg, VA 23976
(434)735-8111
www.cardinalhomes.com

Optional decorative exterior features that are shown on renderings are not included in default pricing. Always refer to sales order for exact specifications and options.

© 2017. Cardinal Homes®
All Rights Reserved.

For more detailed information including dimensions refer to working drawings.



SUMMARY

- 2x6 Exterior wall framing (16" OC)
- Granite surfaces in kitchens and baths
- Stainless steel appliances
- 9-ft. ceilings on first floor
- Luxury Vinyl Plank throughout
- Vinyl lap siding
- Crown molding
- 6-inch baseboard trim*
- Painted crawl space
- Standard foundation with 5 courses of CMU
- 30-year architectural shingles

STRUCTURAL / FRAMING MATERIALS

- FLOOR SYSTEM: LVL & 2x10 Band
- SUBFLOOR: ¾" TONGUE-AND-GROOVE Plywood
- EXTERIOR WALLS: 2X6 16" O.C.
- INTERIOR WALLS: 2X4 STUDS 16" O.C.
- EXTERIOR/MATE WALL SHEATHING: 7/16" OSB
- WALL HEIGHTS: 9FT 1ST FLOOR
- TYPICAL ROOF PITCH: 6/12, 7/12, OR 9/12 @ 24" O.C FOR NON-HABITABLE, 9/12 & 12/12 AT 16" O.C FOR HABITABLE
- OVERHANGS: 12" FIXED
- INT. DOOR OPENINGS: 36" WHEREVER POSSIBLE
- STAIRWAY: 42" WIDE OAK TREADS MIN 36" WIDE*
- HALLWAY: 3'8" WIDE
- INSULATION
- FLOOR: R-30
- EXTERIOR WALLS: R19 – 2X6 / R15 – 2X4
- ROOF: R-38

ELECTRICAL

- DISTRIBUTION PANEL: 200 AMP
- CONDUCTORS: 12 GAUGE WIRING FOR GENERAL CIRCUITS, OTHER CIRCUITS SIZED ACCORDINGLY
- SMOKE/CARBON MONOXIDE DETECTORS: PER CODE/PLAN
- CEILING FAN PREPS: ONE EACH IN BED-ROOM, LIVING ROOM, GREAT ROOM
- INCLUDES TWO SWITCHES (FOR FAN & LIGHT)
- RECEPTACLES/LIGHT SWITCHES: ROCKER STYLE
- EXTERIOR RECEPTACLES: GFCI AT FRONT AND REAR
- LIGHTING: PER PLAN
- BATHROOMS: WALL MOUNT VANITY LIGHT + A VENT/LIGHT FIXTURE DUCTED TO EXTERIOR
- KITCHEN: FLUSH MOUNT LED DOWNLIGHT OVER KITCHEN SINK

PLUMBING

- TUBS / SHOWERS: ONE-PIECE FIBERGLASS/WHITE
- TOILETS: ELONGATED, VITREOUS CHINA/WHITE, COMFORT HEIGHT
- BATH FAUCETS – STAINLESS STEEL
- NOTE: ANTI-SCALD TUB/SHOWER FAUCETS
- PLUMBING SUPPLY SYSTEM: PEX
- DRAIN, WASTE, AND VENT: PVC
- WATER HEATER: PER PLAN. 50 GAL OR 38 GAL LOWBOY, ENERGY SAVER w/PAN
- KITCHEN SINK & FAUCET – 8" DEEP 50/50 w/ STAINLESS STEEL SINGLE HANDLE FAUCET AND SIDE SPRAY

APPLIANCES & FINISHES

- STAINLESS STEEL APPLIANCES
- DOOR HANDLES: LEVER HANDLE, EXTERIOR W/ DEADBOLTS, DEFAULT: SATIN NICKEL
- ROOF: LIFETIME ARCHITECTURAL SHINGLES WITH SYNTHETIC UNDERLAYMENT
- SIDING AND EXTERIOR TRIM: DEFAULT: D4 VINYL CLAPBOARD W/ MATCHING CORNERS, TRIM - WHITE
- WINDOWS: DEFAULT: SINGLE-HUNG, LOW-E, GBG, WHITE, W/SCREEN AND CHILD SAFETY LOCKS
- EXTERIOR DOORS: FIBERGLASS DOOR, PREFINISHED WHITE, TEXTURED
- CEILING FINISH: SMOOTH, FLAT WHITE
- PAINT: Low-VOC
- KITCHEN/BATH CABINETS: DEFAULT: WOLF BRAND W/ CROWN
- LUXURY VINYL PLANK FLOORING THROUGHOUT